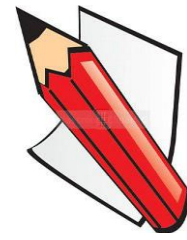


# Tees Valley Sector Profile

## Public Admin, Defence & Education



### Sub-sectors

- **Public admin & defence:** including Public administration and defence; compulsory social security
- **Education:** including Pre-primary, Primary, Secondary, Higher, Other education, Educational support activities

### Trends in employment 2014 - 2024

Trends in employment 2014 - 2024	Sector	Tees Valley Average
Employment change	No change	17,000
Employment change (%)	0%	6%
Replacement Demand	16,000	116,000
<b>Total requirement</b>	<b>16,000</b>	<b>133,000</b>

### Industry Profile

#### Employment

2014 = 40,000      2024 = 40,000

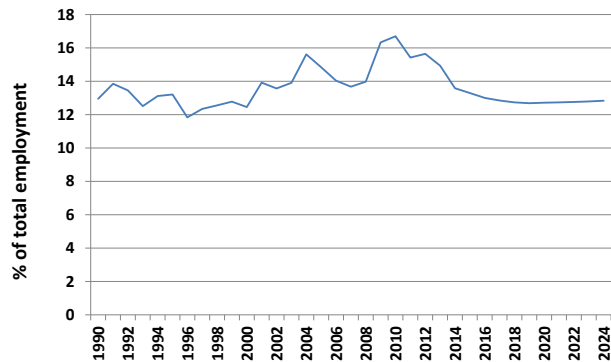
#### Top 3 occupation shares

2014	2024
Professional 37%	Professional 40%
APT 16%	Caring/leisure 19%
Caring/leisure 16%	APT 16%

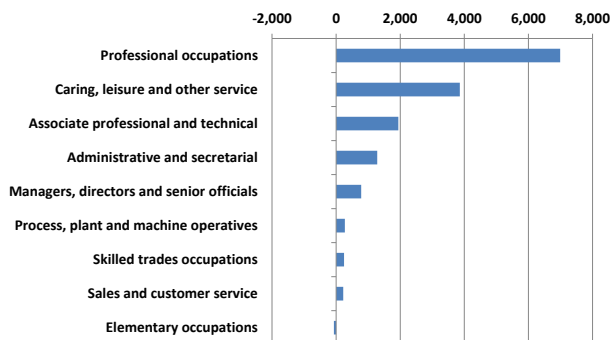
#### Qualified to degree L4+, 2014 - 2024

Total requirement increase = 12,000

### Sector share of Tees Valley employment



### Total occupation requirement, 2014-2024

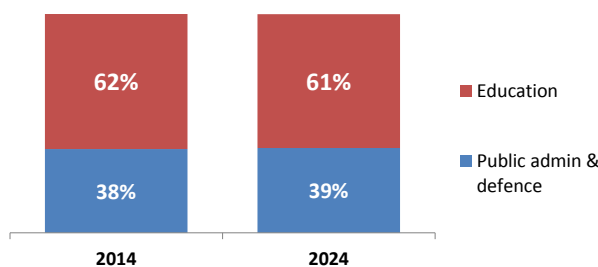


### Employment by gender and status

2014	Sector	2024
27%	Male full-time	24%
32%	Female full-time	32%
6%	Male part-time	7%
30%	Female part-time	32%
2%	Male self employed	2%
3%	Female self employed	3%

With an increasing share of employment, women will hold around two-thirds of jobs by 2024

### Employment shares by sub-sector



### Total skills requirement, 2014-2024

