

REDCAR TOWN CENTRE CONNECTIVITY







Scheme: West Dyke Road Improvements | Transport: Walking, wheeling, and cycling

Artist's Impression of West Dyke Road Improvements



We want to make transport in Tees Valley better.

We want to empower more people to take the bus, walk or cycle, especially for shorter trips. Tell us what you think.

Issue 	<ul style="list-style-type: none">• West Dyke Road is used to get to and from Lakes Primary School, Redcar Primary Care Hospital, and the town centre.• There are pavements on both sides of West Dyke Road, but no dedicated cycle lanes.• Cyclists share the road with other road users, which can feel unsafe.
Opportunity 	<ul style="list-style-type: none">• There are opportunities to make journeys easier and safer for people walking, wheeling, and cycling.• This could include dedicated cycle routes away from traffic making it safer to cycle, and easier to cross the road.
Benefit 	<ul style="list-style-type: none">• Journeys will be safer and easier, improving access into the town centre and key locations including Lakes Primary School, Tesco, and the Primary Care Hospital.
Impact 	<ul style="list-style-type: none">• Cycle lanes may be added on West Dyke Road.• Pedestrian crossing may be changed and improved.

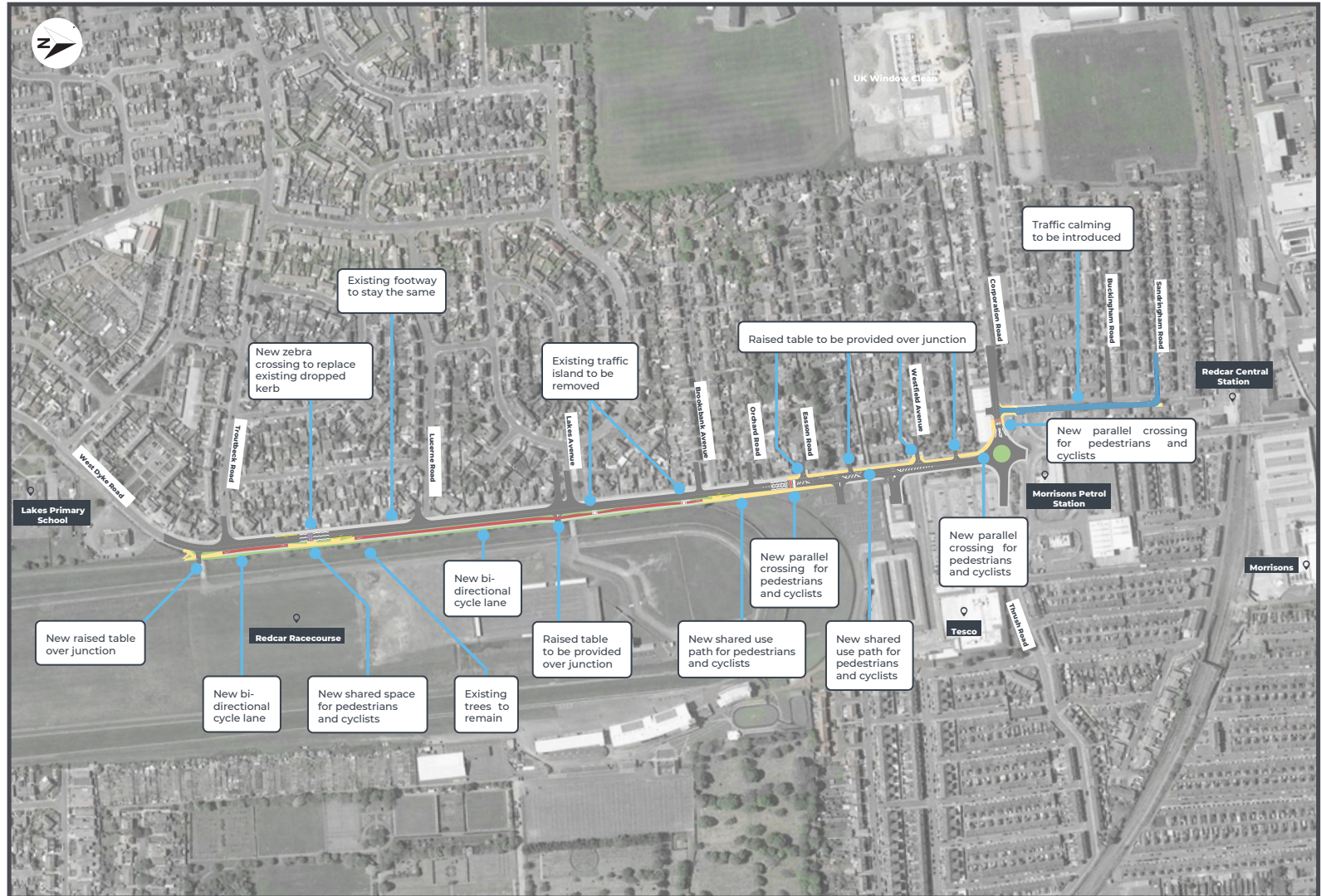
Have your say! Scan the QR code to let us know what you think.



REDCAR TOWN CENTRE CONNECTIVITY



Scheme: West Dyke Road Improvements | Transport: Walking, wheeling, and cycling



- Road
- Footway
- Cycleway
- Shared Use Path
- Area with Less Traffic to Prioritise Walking, Wheeling and Cycling
- Parallel Crossing
- Grass Verge and Planting

Have your say! Scan the QR code to let us know what you think.

