

STOCKTON TOWN CENTRE CONNECTIVITY

Scheme: Bowesfield Lane to Town Centre Improvements | Transport: Walking, wheeling, and cycling



Artist's Impression of Improvements at Bridge Road



We want to make transport in Tees Valley better.

We want to empower more people to take the bus, walk or cycle, especially for shorter trips. Tell us what you think.

<p>Issue</p> 	<ul style="list-style-type: none"> • Parked cars cause issues on this busy route, making it difficult for people to cross the A1305 safely. • There is not a safe walking and wheeling route into Stockton High Street.
<p>Opportunity</p> 	<ul style="list-style-type: none"> • Provide a dedicated cycle lane on Bridge Road. • Improve the path through Trinity Green. • Improve crossings for walking, wheeling, and cycling. • Improve parking on Bowesfield Lane and Parliament Street by formalising on-street kerbside parking. • Introduce a 20mph speed limit on Bowesfield Lane and Parliament Street.
<p>Benefit</p> 	<ul style="list-style-type: none"> • Safer journeys for people walking, wheeling, and cycling. • More convenient access to Stockton High Street by reducing conflict between cars, pedestrians, cyclists and bus users. • Easier access to bus stops and more space for people waiting for the bus.
<p>Impact</p> 	<ul style="list-style-type: none"> • Changes to some of the existing parking arrangements by formalising car parking. Consider changes to the existing road layout on Bridge Road.

Have your say! Scan the QR code to let us know what you think.

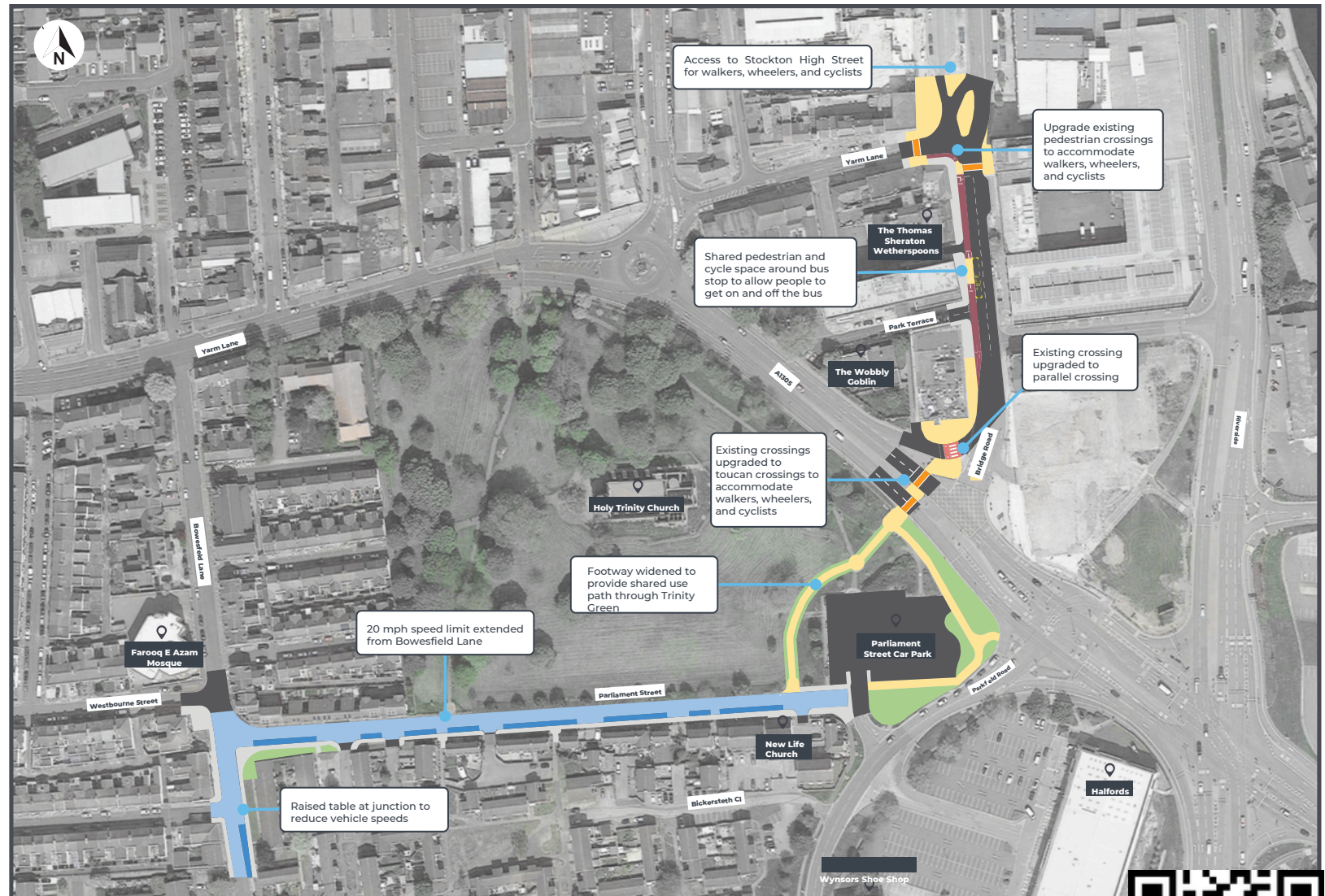


STOCKTON TOWN CENTRE CONNECTIVITY

Scheme: Bowsfield Lane to Town Centre Improvements | Transport: Walking, wheeling, and cycling

TEES VALLEY

- Road
- Footway
- Cycleway
- Shared Use Path
- Area with Less Traffic to Prioritise Walking, Wheeling and Cycling
- Parking Bays
- Signalised Crossing (Toucan or Pedestrian)
- Parallel Crossing
- Grass Verge and Planting



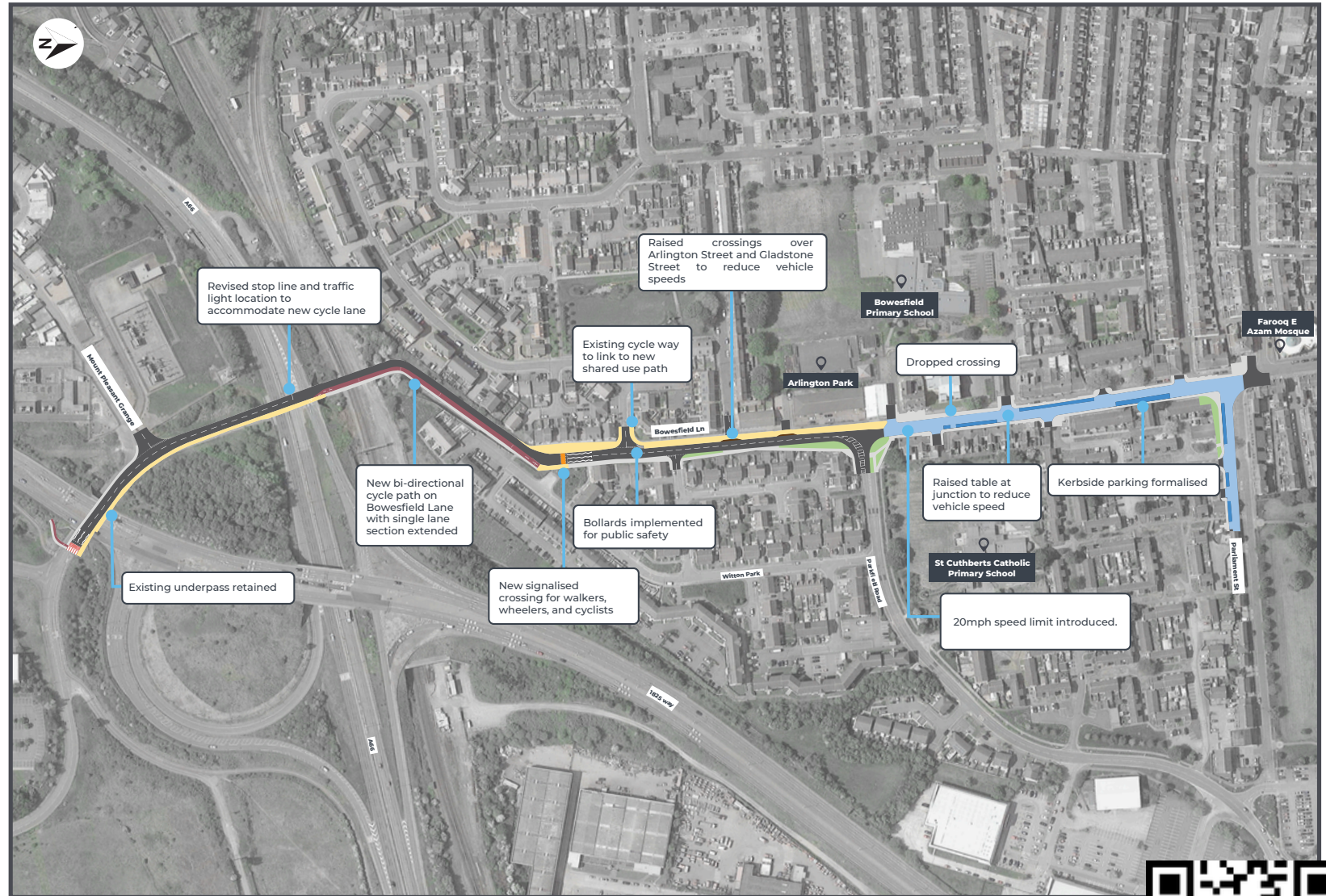
Have your say! Scan the QR code to let us know what you think.



STOCKTON TOWN CENTRE CONNECTIVITY

Scheme: Bovesfield Lane to Town Centre Improvements | Transport: Walking, wheeling, and cycling

TEES VALLEY



Have your say! Scan the QR code to let us know what you think.

